



MAD

Elevator Fixtures

***Pre-Wired
Controller Solution***

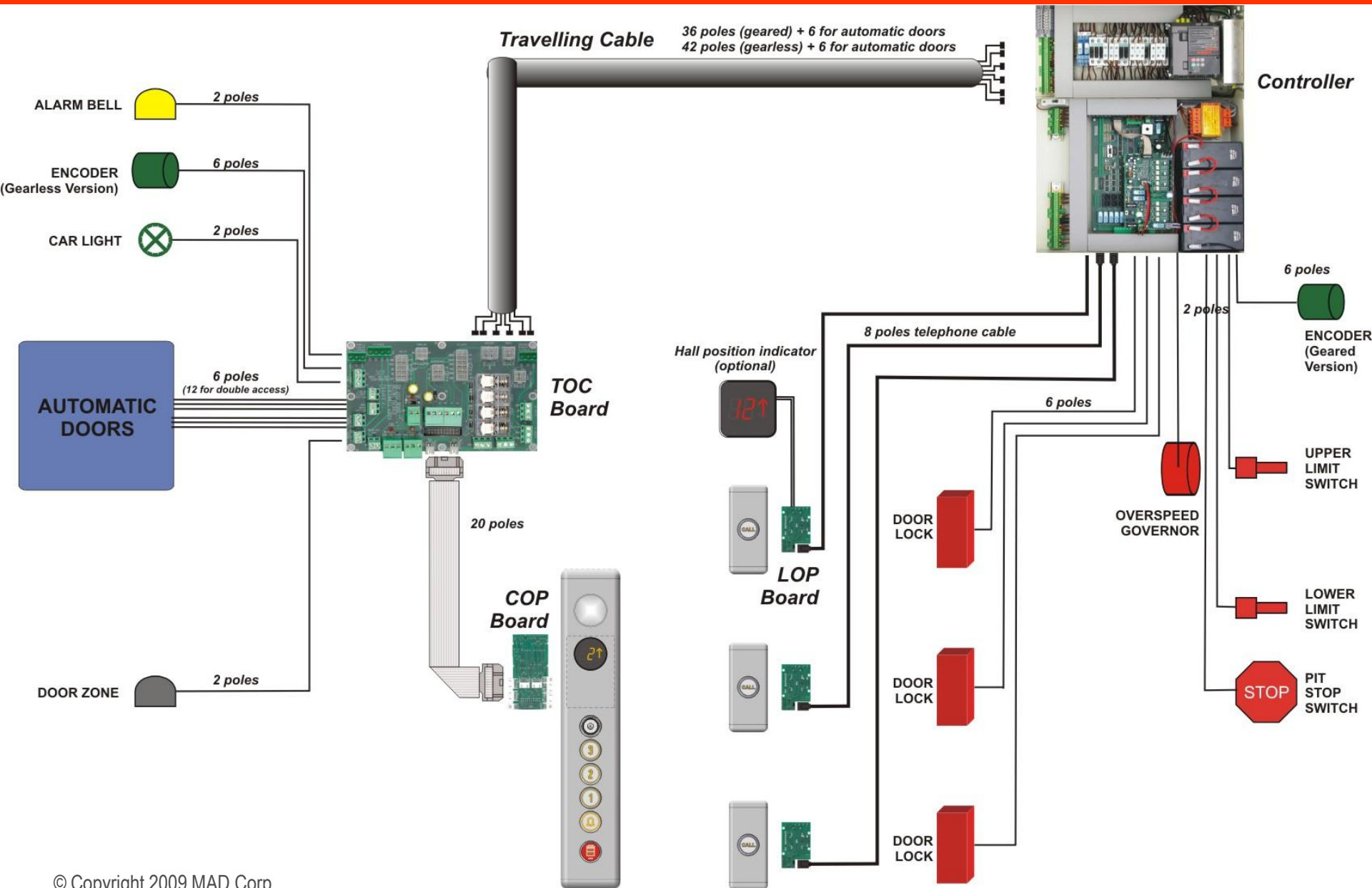


Complete Pre-wired System

Full benefits of pre-wiring can be achieved through the adoption of MAD's Complete Pre-wired System for Homelifts:

- Electronic controller with inverter (for geared and gearless applications)
- Top of car box (featuring door management and safety chain management)
- Pre-wired Car Operating Panel
- Pre-wired Hall fixtures

Complete Pre-wired System – Main Block Diagram

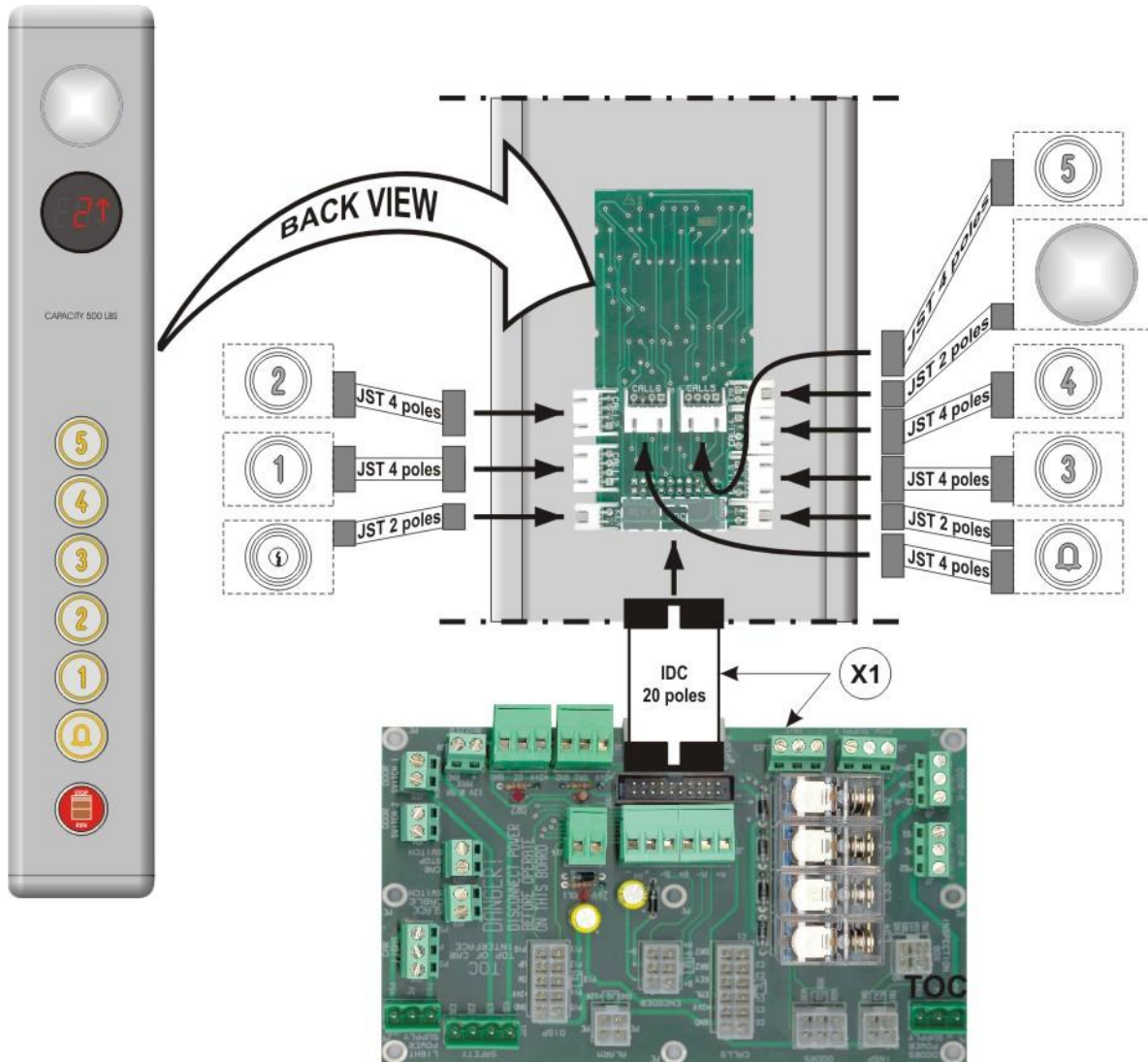


Complete Pre-wired System – HOMELIFT Controller

- ***Newly designed microprocessor-based electronic controller specifically designed by DMG for homelifts***
- ***Suitable for both Geared (with Fuji inverter) and gearless (with Fuji/KEB drive) applications***
- ***Power supply: single phase 220V AC 60 Hz (2kW max nominal power)***
- ***Flexible mechanics: controller may come in a single cabinet or in two separate units (for machine-room-less applications), one in the lift well, the other above top floor hoistway door***
- ***6 stops max, 1 or 2 access***
- ***Single automatic call (no registration) on residential elevators (ASME A17.5) or constant pressure operation on platforms (ASME A18.1)***
- ***Manual or automatic car and floor doors***
- ***Accurate encoder-based positioning system***
- ***First run self-learning feature***
- ***Integrated emergency lowering system***
- ***System faults are detected by the CPU software and stored in memory for reporting and troubleshooting***

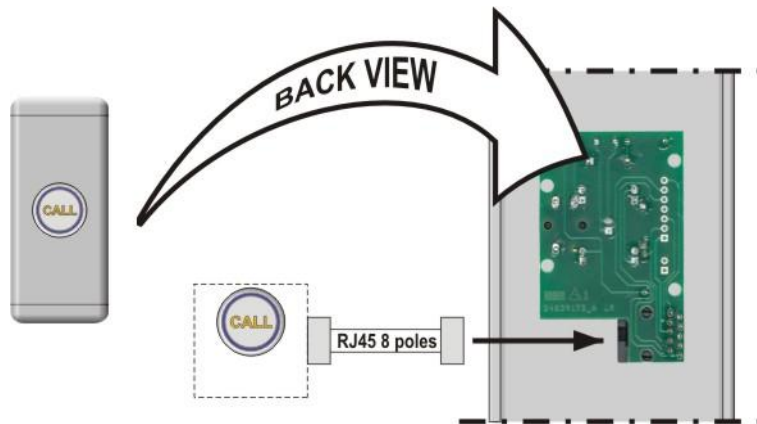


Complete Pre-wired System – COP Pre-wiring



- An interface card (with embedded P.I.) is placed behind the car operating panel and caters to pushbuttons and emergency light
- COP interface card is connected to Top of car card with 20 poles flat cable
- Top of Car card is then connected to the controller through the traveling cable

Complete Pre-wired System – Hall Stations Pre-wiring



- Hall station buttons are directly linked to the controller with 8 or 10 poles RJ45 phone cables
- *Dual Light* hall button has double feature:
 - “CALL” symbol is lit upon activation
 - Halo gets lit when car arrives at floor